



SEAQUINN

112' (34.14m) :: WESTPORT :: 2013 :: 8 GUESTS :: 4 CABINS :: 6 CREW :: ASKING PRICE \$8,995,000 USD

OVERVIEW

Type	Motor Yacht Raised Pilothouse	Builder	WESTPORT
Top Model	Raised Pilothouse	Naval Architect	Jack Sarin
Year Built	2013	Interior Design	Westport Yachts
LOA	112' (34.14m)	Hull	GRP
Beam	23' 7" (7.19m)	Deck	Teak
Draft	5' 3" (1.6m) Min 5' 3" (1.6m) Max	Engines	2000 HP, Twin, 2013, Inboard, Diesel, MTU, 16V 2000 M91, 2800hrs / 2800hrs
GRT	208.00	Max Speed	25 Knots
Fuel	5500 Gal	Cruise Speed	20 Knots
Water	1100 Gal	Range	2500
Flag	USA	Location:	Fort Myers, Florida, United States

★★★★★
Alex Rogers

T+1 (954) 522-3344

M+1 (954) 401-9988

ALEX.ROGERS@NORTHROPANDJOHNSON.COM

NEW PHOTOS AND VIDEO COMING SOON!

Stay tuned for New photos!

OVERVIEW

SEAQUINN is a beautiful 2013 Westport 112 boasting a GRP hull and superstructure, complemented by teak decks. Number 49 of the popular Westport 112 Pilot House motor yacht series, SEAQUINN stands out as one of its most comprehensive builds to date. Boasting an updated transom design that extends the aft deck, twin cockpit boarding gates and warm raised panel mahogany cabinetry throughout, SEAQUINN is primed for on-water adventures.

SEAQUINN offers an array of notable features that elevate both her luxury and functionality. Highlights include stainless steel gates for easy access to the swim platform and a hydraulic electric passerelle. Amenities like the RGF Environmental Ionization Air Purifier System, teak boat deck, Tucci umbrellas and an upgraded audio system ensure time spent onboard is as comfortable and convenient as possible.

SEAQUINN's interior is adorned with upscale custom decor and design features, characterized by raised panel mahogany throughout. The spacious salon beckons with an inviting L-shaped settee, loose chairs and a well-appointed bar, providing the perfect setting for relaxation and socializing. Adjacent, the dining area comfortably seats eight guests amid custom wood buffet cabinets storing glassware, china and silver. A fully equipped galley awaits forward, featuring a cozy dinette, stone countertops and Amtico vinyl flooring with diagonal mahogany planking and Holly strip inserts.

Accommodations aboard SEAQUINN welcome up to eight guests in four well-appointed suites. The full-beam master suite, located midship, offers a walk-in closet, his-and-her en-suite bathrooms with rare translucent quartz, a new 55" TV and large hull-side windows offering panoramic views of the surrounding cruising grounds. Three additional well-appointed guest cabins, including a VIP suite, a port double, and a starboard twin, each boast entertainment centers, LCD television screens and en-suite bathrooms. With quarters for up to six crew members, SEAQUINN promises a personalized yachting experience for all onboard.

On her exterior, the main deck aft offers a spacious retreat for casual outdoor gatherings and alfresco dining, while the expansive flybridge beckons with built-in seating, a wet bar and a barbecue nestled under a composite hardtop. Retreat further aft to discover additional seating and two large retractable umbrellas.

DIMENSIONS & CAPACITY

- LOA: 112' (34.14m)
- Max Draft: 5' 3" (1.61m)
- Fuel Tank: 5,500g (20,819 L)

- Fresh Water: 1,100g (4,163 L)
- Holding Tank: 600g (2,271 L)
- Hull Material: Fiberglass
- Hull Config: Semi displacement
- Stabilizers Standard / Naiad - "At Rest"
- 2 x MTU Engines
- Engine Model: 16V2000
- Engine Type: Inboard
- Power HP: 2,000 each
- Engine Hours (May 2024) Port: 2,800 / Stb: Hours 2,800
- Generator Hours (May 2024): 9,000 hrs

HIGHLIGHTS & CUSTOM FEATURES

- Upscale custom decor and design features, Raised Panel Mahogany throughout
- New style wide-design transom which lengthens Aft Deck, more spacious 3rd crew quarters and utility area, as on a new 112' Westport
- Port and starboard Aft Deck boarding doors
- Port and starboard stainless steel gates Aft Deck to Swim Platform
- Naiad - "At Rest" stabilization
- ASEA Shore Power Converters
- Hydraulic Electric Passerelle
- Pacific Coast Marine electric/automatic Aft Deck Salon doors with multiple features and security
- Air-conditioned Engine Room
- Headhunter MSD Waste Treatment System
- Kaleidoscope music/movie server and player
- Gloss Aft Deck and Flybridge Hardtop undersides
- Optional bow shore cord with Glendenning Cable master electric reel
- Starboard entry foyer features optional privacy niche to fully close off Salon from Galley and Pilothouse area
- Upscale rare translucent quartz in Master Stateroom his and hers baths
- High-gloss Mahogany perimeter soffits in Staterooms
- Electric pop-up 60" Salon TV in Mahogany cabinetry with Onyx countertop, Mahogany back wall, and recessed overhead LED lighting
- Electric pop-up 37" TV in Pilothouse starboard forward corner
- Solid Mahogany Dining table
- "Flamed" Mahogany paneling on main staircase walls & above Master Stateroom night tables
- Custom arc-style dresser in Master Stateroom
- Mahogany staircase rails
- RGF Environmental Ionization Air Purifier System

- New 55" TV in Master Stateroom 2021
- Teak Boat Deck
- Tucci Umbrellas
- Upgraded Audio System

GALLEY & LAUNDRY

- Island Galley with (4) upholstered stools, stone countertop, (2) refrigerator drawers
- Galley Flooring: Amtico commercial Vinyl grade flooring with diagonal Mahogany planking & Holly strip inserts
- Overhead Detail: Perimeter soffit with crown molding and rope light
- Cabinets: Sapele Hardwood and Tiama cabinetry. Included are the cabinets along starboard wall under windows
- Galley Countertops: Stone
- Dinette Counters: Stone
- Sink
- Slide-out shelving in some cabinets
- L-Shaped leather dining settee, port forward with custom table
- (6) Cabinets on forward bulkhead
- Electric blinds & Roman shades
- iPad controlled via Crestron

Appliances:

- 47" LCD/LED TV - diagonal in forward starboard corner
- 48" Sub-Zero refrigerator/freezer with icemaker and Mahogany veneer face
- Cooktop: Miele 5-burner (2018)
- Oven: Miele (2018)
- Hot water disp.: Insinkerator
- Dishwasher: Miele with Mahogany veneer face (2018)
- Viking Convection microwave oven (2018)

NAVIGATION AND COMMUNICATION EQUIPMENT

- All Flybridge monitors new in 2021
- New FLIR 400 in 2021
- Separate CPU's for Time-Zero Pro for redundant electronic plotting (2018)
- Navigation/Electronic Chart System: Time-Zero Pro charting system in the Pilothouse and Flybridge
- Flybridge Radar: (2) Dual Furuno FAR-2117 X-Band Radars with 19" LCD display and one repeater on Flybridge.

- Depth Sounder: Furuno FCV1200BB-P with 15" LCD monitor
- GPS: Furuno GP-150D at Pilothouse Dash and at Pilothouse Desk
- Wind, Depth and Speed: B & G HS3000 includes wind, speed, depth, and heading displayed on full-function displays in the Pilothouse and Flybridge
- Compass: One Ritchie Globe Master F-600 in Pilothouse, and (1) Ritchie compass on Flybridge
- Aft Depth Sounder: Furuno RD-33 Digital Display Depth Sounder with Smart Sensor. (Located in Captain's Quarters)
- Autopilot System: Simrad AP70 in Pilothouse and on Flybridge
- New Main Monitor in Pilothouse

DECK EQUIPMENT

ON-DECK UTILITY ROOM

- Perlick stainless steel wine cooler
- Perlick stainless steel refrigerator
- Work counter with cabinets above
- Miele Professional washer and dryer
- Mahogany & Holly Amtico flooring

BOATDECK

- Storage cabinets added behind Flybridge settee with double doors
- Davit: Hydraulic powered Nautical Structures; Crane features 359 degrees of rotation, wireless proportional control, and a 2,500 lb. load capacity
- Chocks: Removable, for tender
- Rails: Stainless rails with mid rail around Boat Deck
- Hot Tub: Molded-in spa with sun pad top and storage below
- L-Shaped Boat Deck lounge seating across from Spa with cushions and custom high-gloss Teak table with inlay
- Towing lights
- Flagstaff: Stern Flagstaff with 5' x 8' U.S. Flag

FOREDECK

- Bow Sun Lounge: With cushions and cover and storage below
- Keyhole Seat: Molded settee with cushions & custom filler cushions to create sun lounge, with covers
- Boson's Locker: 110v outlet inside with lights and storage
- Crestron water-proof remote controlled
- Speakers

SAFETY & SECURITY EQUIPMENT

- Life Raft: (2) 8-Man Zodiac life rafts
- Life Preservers
- Ring Buoys: (2) 24" Diameter ring buoys secured on exterior of vessel
- Bell: Ship's bell per Coast Guard regulations
- EPIRB: ACR
- Fixed panels are located at convenient locations providing operational information and alarm conditions with a programming panel located in the Pilothouse

Items on safety control panel as follows:

- (14) Combo smoke/ heat sensors: Combo sensors are located in all staterooms, interior public and crew areas
- (1) Heat Sensor in the Engine Room
- (4) CO alarms: In crew staterooms, Capt. Stateroom, and Crew Galley/Lounge
- Security system: The Aft door, Crew door, Salon door, port and starboard doors, Flybridge hatch, and VIP hatch monitored for unauthorized entry
- Tank levels monitored: (3) fuel tanks, (2) fresh water tanks, both gray water sumps and black water tank (Gray water boxes have alarms on DC pumps. Black water tank alarmed at 75% and 98% full levels.)
- Monitoring of AC supply switching from all available sources with Volts, Line 1/Line 2 Amps & KW monitored for each generator
- All five bilge switches monitored for water detection

ENTERTAINMENT EQUIPMENT -

- Each accommodation space is equipped with audio/video entertainment equipment, which provides for a variety of entertainment choices.
- Audio/ Video selections includes satellite based radio and television, as well as on board sources including (DVD & CD in Crew Areas), and a central movie server
- Audio Video distribution is controlled through wireless control.
- Control for all Audio Video components is through remote controllers. Boat-wide UPS battery back-up for the Audio Video components.

COMMUNICATION EQUIPMENT,

Ship to Ship/Shore:

- VHF: (2) Icom M604 DSC VHF radios in Pilothouse & one command mic on Flybridge
- VHF: VHF radio installed in tender

- SSB: Icom M802 w/ automatic antenna tuner EPIRB
- Loud Hailers: (1) Loudhailer, one intercom to aft deck integrated to PH radios

Satellite Communications (SATCOM) Components:

- Connectivity is provided by, Mini VSAT, 3G Cellular, Wi-Fi Amp, Fleet Broadband and shore connection located at aft bustle
- Telephone System: Panasonic (PBX), digital phone system. All stations have speaker phones for intercom and paging.
- Phone system is connected to Satcom, Vsat VoIP, Cell Phone and Shore Phone for voice lines throughout.
- The Pilothouse has a fix mounted phone with an LCD display.
- A single shore connection is provided at the port bustle t with a 100 ft. combo Telephone | CATV shore cord
- Tellular Cellular Phone System, GSM 3G Satellite Telephone: Fleet Broadband FB150
- SAT TV system KVH HD7 – 11 receivers new 2021

DISCLAIMER

Details of this vessel are offered in good faith but we cannot guarantee or warrant the accuracy of this information nor warrant the condition of the vessel. Buyer should instruct his agents, and/or his surveyors, to investigate such details as the buyer desires validated. This vessel is offered subject to prior sale, price change, or withdrawal without notice.





SEAQUINN-19









































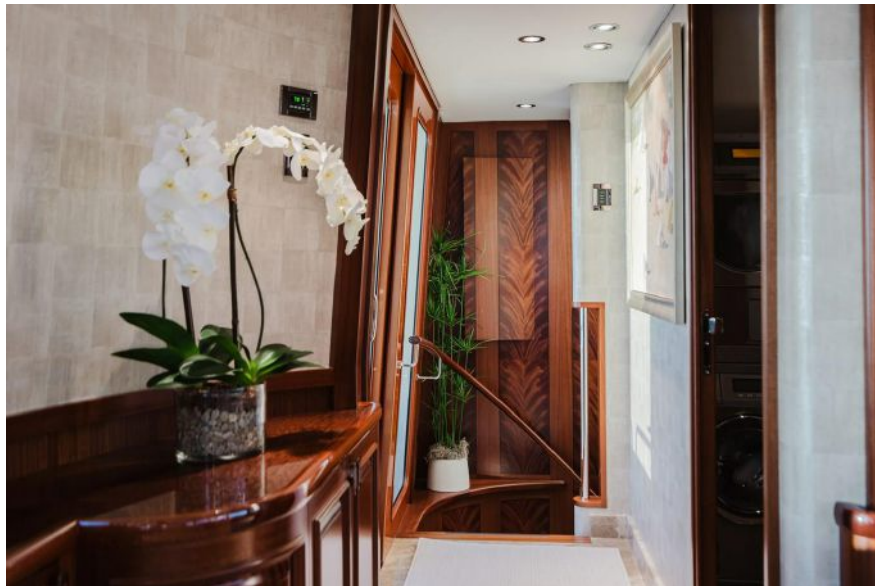


















































7749 General Arrangement

