



## SURPLUS LINES

91' 8" (27.94m) :: HATTERAS :: 2019 :: 10 GUESTS :: 4 CABINS :: 3 CREW :: ASKING PRICE \$6,199,000 USD

### OVERVIEW

Model	M90 Panacera	Builder	HATTERAS
Year Built	2019	Naval Architect	Hatteras
LOA	91' 8" (27.94m)	Interior Design	Hatteras
Beam	22' 8" (6.91m)	Hull	Fiberglass
Draft	5' 8" (1.73m) Min 6' 2" (1.88m)	Deck	Teak
	Max	Engines	1900 HP, Twin, Inboard, Diesel, Caterpillar, C32A, 2200hrs / 2200hrs
GRT	174.00		
Fuel	3285 Gal	Max Speed	25 Knots
Water	820 Gal	Cruise Speed	20 Knots
Flag	United States	Range	450
		Location:	Fort Lauderdale, Florida, United States

★★★★★  
**Alex Rogers**

T+1 (954) 522-3344

M+1 (954) 401-9988

ALEX.ROGERS@NORTHROPANDJOHNSON.COM

## OVERVIEW

---

The Hatteras M90 Panacera "SURPLUS LINES," delivered in 2019, is a custom-built motor yacht designed for a large family, boasting over \$2 million in custom features. Powered by Caterpillar C32A 1900hp engines (2200 hours) with a CAT360 joystick control system, ensuring performance and comfortable cruising.

The yacht's interior includes a modern salon with sliding glass doors leading to a foldout balcony to port, formal dining area, and a country galley, all with elegant furnishings and ample space. Below deck, 10 guests are accommodated in 4 guest staterooms, all en-suite, including a full-beam master stateroom, a VIP stateroom, and two convertible guest staterooms each with three twin berths.

The exterior is designed for entertaining, featuring an aft deck with alfresco dining, a foredeck with a sun pad and recessed dining table and seating, and a spacious and versatile flybridge, open-air and fully enclosed areas, with multiple seating and dining options.

## MAIN FEATURES

---

- Over \$2 million in custom features, including a country kitchen layout
- A port side salon opening to a custom balcony with triple sliding glass doors.
- Accommodates 10 guests in 4 staterooms
- iPad controls for lighting, entertainment, and electric blinds.
- Caterpillar C32A 1900 HP engines with 2200 hours and a CAT360 joystick control system for easy maneuvering.
- Zero speed fin stabilization, hydraulic bow and stern thrusters, and dual water makers
- Air conditioned flybridge
- Custom flybridge layout
- Hydraulic swim platform

## INCLUDED OPTIONS - HIGHLIGHTS

---

- Custom Carbon Fiber teak step boarding ladder with dual teak hand rails
- Covers for exterior cushions and seating (all levels)
- Pipe Welders sail shade for bow deck seating area and flybridge
- Custom fold down balcony on main deck port side with new sliding glass door design (\$250K Option)
- Teak decks on balcony
- Pantograph door starboard side with electric lock for access to galley and four side boarding doors
- Stern port and starboard docking windlass, 4000 lb.
- Courtesy LED bicolor white/blue lights
- Tri-color (red/white/blue) lights in overhang above walk around decks
- Pre-wired for lighted transom name
- Port and starboard wide angle cameras (2)
- (2) 8 person life rafts with hydrostatic release installed located on top of hardtop
- Freshwater connection inside anchor storage compartment

- Bow sunpad storage compartment with automatic lift with weather proof electrical outlet
- Release Marine bow lounge table with mother of pearl inlay

## SALON AND DINING

---

The expansive salon is modern with white-oak sole and light-tone furnishings, a club chair to port, and a large L-shaped sofa with storage to starboard. Large windows and indirect lighting enhance the salon's open feeling. Sliding glass doors leading to a foldout balcony to port.

Forward of the salon is a formal dining area with a Release Marine table accommodating eight guests, and a buffet cabinet housing fine china, an ice maker, and a drink fridge. Internal stairs facing aft lead to the bridge deck.

## GALLEY

---

The galley is ideal for cooking and entertaining, with upgraded Wolf appliances, a Sub-Zero refrigerator, and a wine cooler. The space comfortably seats six at the forward dinette, with skylights and large windows providing an abundance of natural light.

## GUEST ACCOMMODATIONS

---

Surplus Lines offers accommodation for up to 10 guests in 4 staterooms on the lower deck, comprising of a full beam master stateroom (amidships), a VIP stateroom (forepeak), and 2 guest staterooms, port and starboard, each with convertible twin beds and a Pullman. She is also capable of carrying up to 3 crew onboard to ensure a relaxed luxury yacht experience.

### MASTER STATEROOM

The master stateroom, located midship and aft, boasts an impressive amount of space, offering significantly more volume than previous Hatteras 90 Panacera builds, with an additional 22 inches both forward and aft. The centerpiece is a king-size bed with storage underneath, operated by an electric-powered actuator. To the port side, beneath the window, there's a custom single bed that doubles as a couch or lounge area, perfect for relaxing, reading, or providing an extra bed for children. The thoughtful design extends to the starboard side, where built-in drawers provide ample storage, and dual closets are located aft and to port. The ensuite bathroom is equally luxurious, featuring heated floors, a large double vanity, and a spacious walk-in shower. Just outside the master lies the custom coffee bar, it holds a drink fridge below, room for a coffee machine on the counter top and glassware storage above.

- Massive windows port and starboard
- Port dresser replaced by Day Bed Sofa with 2 drawers below and end table
- Aft closet with lower chest of drawers and upper hanging rod
- Forward closet with upper and lower hanging rods
- Safe in master stateroom closet
- King mattress system upgrade in master stateroom
- Automatic lift to access storage under the master berth
- Electric blinds throughout with blackout shades

- 65" Television
- Heated floor in head
- Shower seat
- Medicine cabinet in head
- Stabilizer hatch in master insulated for noise reduction
- Crestron iPad controls

#### VIP STATEROOM

The VIP forward stateroom has a centerline queen berth with an ensuite bathroom featuring heated floors. Blackout shades, electric blinds and Crestron controls keep your guests comfortable.

#### PORT GUEST STATEROOM

The portside stateroom offers flexible sleeping arrangements, with three twin beds that can be converted into a queen by sliding the two lower bunks together. This cabin also features an ensuite head and shower, complete with heated floors for added comfort. The audiovisual systems are conveniently controlled through Crestron iPad controls, ensuring ease of use.

- Sliding twin berths that convert to a queen size bed
- Pullman on forward bulkhead in port stateroom
- Closet with upper and lower hanging rods
- Heated floors in head
- Electric blinds throughout with blackout shades
- Crestron Controls

#### STARBOARD GUEST STATEROOM

The starboard stateroom offers versatile sleeping options, with three twin beds that can be reconfigured into a queen by sliding the two lower bunks together. This cabin also includes an ensuite head and shower, featuring heated floors for extra comfort. The cabin's audiovisual systems are managed through Crestron iPad controls, providing a high-tech, intuitive experience.

- Twin beds that convert to a queen size bed
- Pullman on forward bulkhead in starboard stateroom
- Heated floors in head
- Electric blinds throughout with blackout shades

## FLYBRIDGE

---

The flybridge is accessible via a custom interior stairway with an electric sliding door from the salon, or through the stairwell from the aft deck. Although it is an open-bridge model, the flybridge features a custom enclosure, providing the best of both worlds. Whether you prefer the open air or the comfort of 48,000 BTU air-conditioning, the bridge deck offers flexibility. The enclosure maintains an open-bridge feel without restricting visibility and allows the side curtains to be pinned up against the hardtop for a true open-air experience. Forward to port, the flybridge offers a U-shaped seating area raised 5 inches for improved visibility while cruising. The helm is forward to starboard, equipped with two Stidd helm chairs.

Just aft of the seating, a built-in cabinet to port houses a custom cooler connected to an Eskimo ice machine with exceptional output. To starboard, behind the helm chairs, there is a cabinet with a sink and three drink fridges. Further aft, you'll find a large L-shaped built-in couch with storage underneath, accompanied by two Release Marine cocktail tables. To port, a dining table for eight is available, with a dropdown TV integrated into the hardtop. All audiovisual systems are controlled via Crestron iPad controls. For docking, both port and starboard sides of the flybridge feature wing stations, each with bow and stern thruster controls, CAT360 joystick control, and throttles for precise maneuvering and excellent visibility.

The aft area of the flybridge is versatile and open. The upgraded telescoping davit can accommodate toys like jet skis and Seabobs. This area can be set up with a custom Release Marine table and chairs for dining or cocktails. These can be stowed away when not in use in the custom storage solution. The aft area also includes a stainless steel grill and is shaded by Pipe Welders sail shades, creating a perfect space for outdoor entertaining.

## HIGHLIGHTS

- (2) Wing Stations with CAT360 joystick controls (clutch, throttle, bow and stern thruster controls)
- Stidd helm chairs with Garmin controller installed in the armrest
- Watermaker remote mounted under flybridge helm
- Custom flybridge arrangement with modified seating and layout
- Slide storage box aft
- Hard door for bridge entry from aft deck (swing in to the left)
- Hardtop painted Alexseal Stardust silver
- Pad eyes and halyards installed on hardtop
- Removable/stowable Ladder for access to hardtop, ladder storage with hanging brackets to mount on starboard flybridge railing
- Teak steps on flybridge stairway
- Seacrylic door on centerline of flybridge leading from the deck under the hard top to the aft bridge deck
- Aft curtain above L-shape sofa to fold up and suction cup to hard top
- Teak on flybridge and boat deck sole
- Hydraulic telescoping davit on flybridge, 2000 lbs.
- Eskimo ice machine 560 lb./day with ice bin
- (2) Sub-zero drawers on bridge
- Pipe Welders sail shade on aft flybridge deck
- Large grill on flybridge
- U-Shaped port side forward riding seat, seat height 5" above standard. Forward portion of seat retains access hatch to helm storage
- Starboard L-shaped sofa aft
- (2) Release Marine teak cocktail tables with cup holders for L-shaped seating
- Wrap-around seating starboard side of helm
- Custom storage cabinet for inflatable slide and toys on flybridge aft
- Additional electrical outlets
- Removable aft deck railing
- Flybridge air conditioning, 48,000 BTU capacity with reverse cycle

## CREW QUARTERS

---

The crew area can be accessed either via a stairway from the aft deck or directly from the swim platform. Inside, there is a comfortable lounge with a settee and a compact galley that features four Sub-Zero refrigeration drawers, a stainless steel sink, a microwave, and storage cabinets. Beneath the crew sofa, you'll find custom dive tank storage, and the space is plumbed to fill the dive tanks while they remain in their racks. A dedicated closet in the lounge is designed to store wet gear such as life jackets and rain gear, allowing them to dry properly. Accommodations for up to four crew members include a starboard cabin with a queen-size bed and a portside cabin with bunks. Both cabins share a head and shower, providing a comfortable living space for the crew.

- Custom crew arrangement with modified crew lounge and crew portlight
- Captain stateroom with queen berth
- Crew stateroom with twin berths
- Size of bilge compartment and crew hatch were maximized for as much storage as possible. This area is painted and well lit.
- (4) 24" Subzero freezer drawers
- Bar countertop
- Microwave
- 20" TV
- Recessed fire extinguishers
- Storage for 8 dive tanks beneath crew seat in outboard compartment. Hooka line installed on transom.
- Predisposition for installation of tank fill compressor
- Mattress system upgrade in crew quarters
- Porthole windows added to crew staterooms
- Second washer/dryer in crew area
- Hattcon control panel for monitoring all systems located outside of the captain cabin in the crew lounge

## DISCLAIMER

---

Details of this vessel are offered in good faith but we cannot guarantee or warrant the accuracy of this information nor warrant the condition of the vessel. Buyer should instruct his agents, and/or his surveyors, to investigate such details as the buyer desires validated. This vessel is offered subject to prior sale, price change, or withdrawal without notice.



Aerial View



Swim Platform



Aft Deck



Aft Deck





Aft Deck



Main Salon



Main Salon



Main Salon



Main Salon and Dining



Dining





Day Head



Galley





Galley



Galley



Master Stateroom



Master Stateroom



Master Stateroom



Master Bath





VIP Stateroom

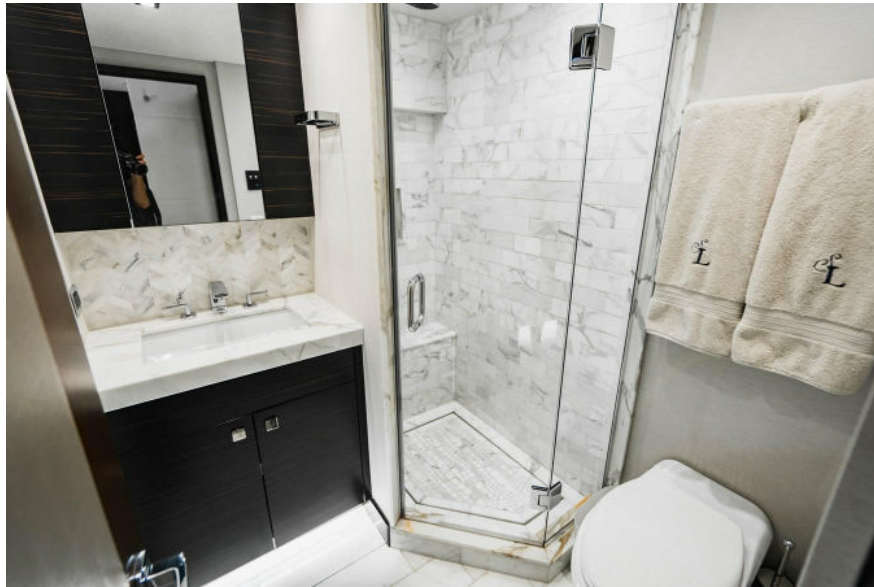


VIP Stateroom

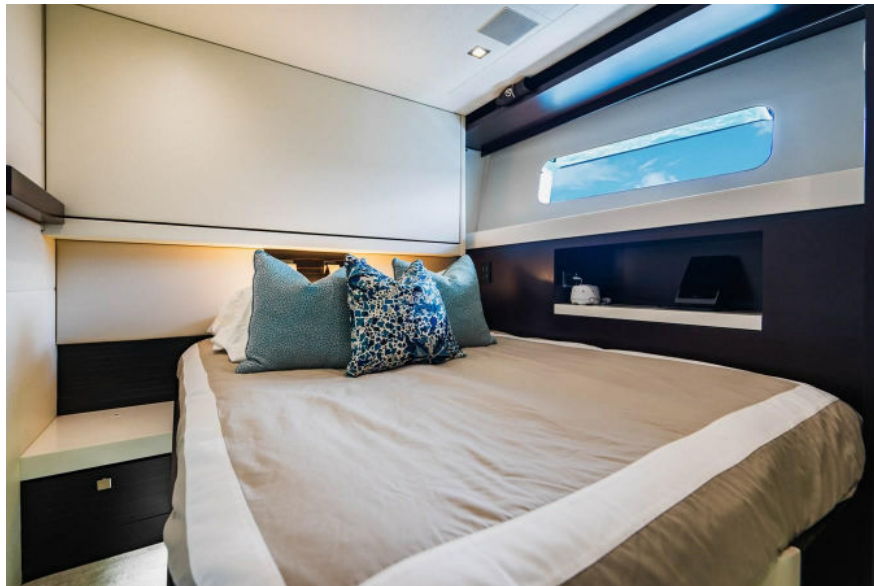




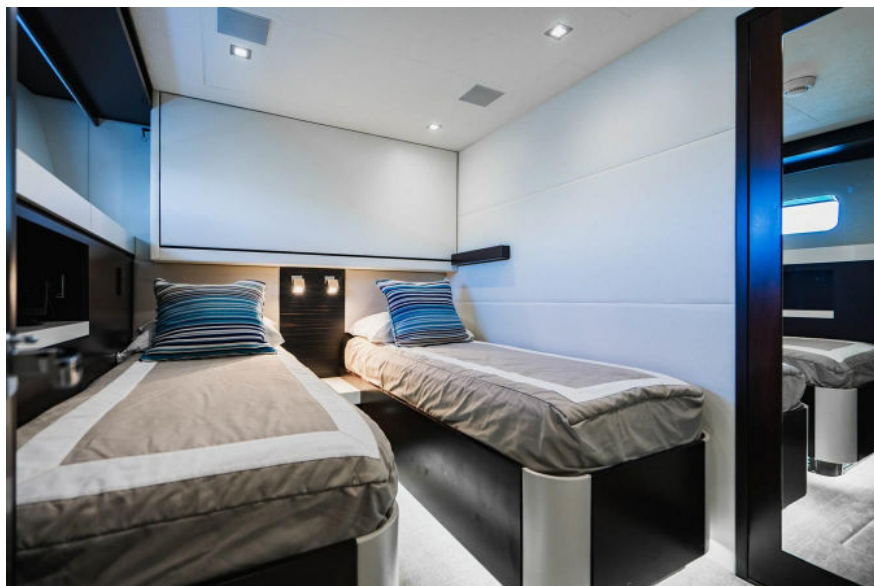
VIP Stateroom



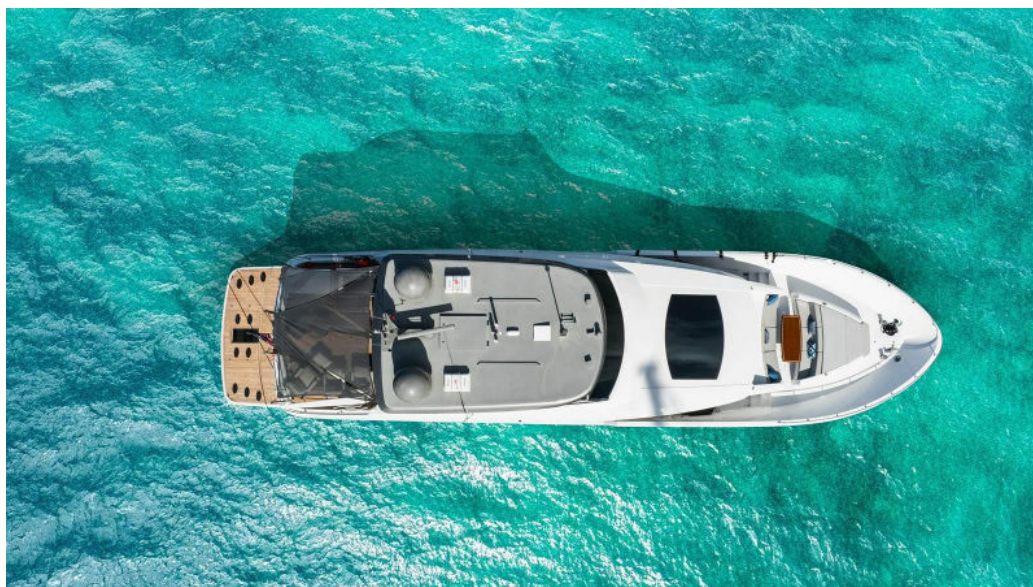
Twin Guest Stateroom Converted - Starboard Side



Twin Guest Stateroom - Port Sid



Aerial View

















Bow Seating





Aerial View



Engine Room





Engine Room



Surplus Lines

